



2/509 Port Road West Croydon SA

3 2 1

These generous size high-spec 3-bedroom homes showcase open plan kitchen/living/dining featuring a bathroom with a full-size bath, ensuite as well as a separate W/C downstairs for added convenience. Each home offers its own private backyard, dedicated laundry and garage with remote control panel-lift door.

Enjoy a wide range of quality inclusions including stone bench-tops, stainless-steel Smeg and Euro appliances, ducted reverse-cycle air-conditioning and much, much more.

This is an amazing opportunity if you're looking to take advantage of up to \$30,000 in the various grants, reliefs

Type : Townhouse

View : <https://www.timmorris.com.au/8081807>



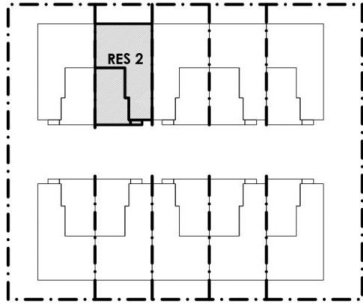
Anthony Fonovic
08 7225 2525



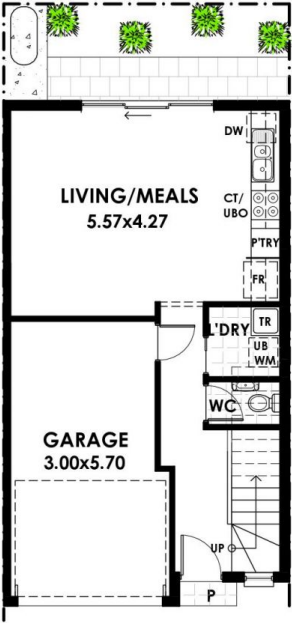
Tim Morris
08 7225 2525

[For full version visit the website](#)

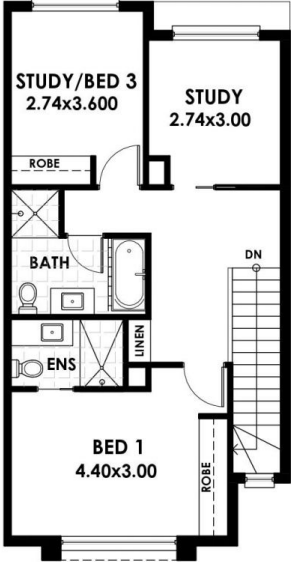
RESIDENCE 2	
AREAS	m ²
LOWER LIVING	41.00
UPPER LIVING	64.00
GARAGE	19.40
PORCH	1.00
TOTAL	125.40
SITE AREA	76.0m ²



R P O R T R D .



GROUND FLOOR PLAN
SCALE 1:100 @ A3



FIRST FLOOR PLAN
SCALE 1:100 @ A3

